

TERPSTRA & ASSOCIATES

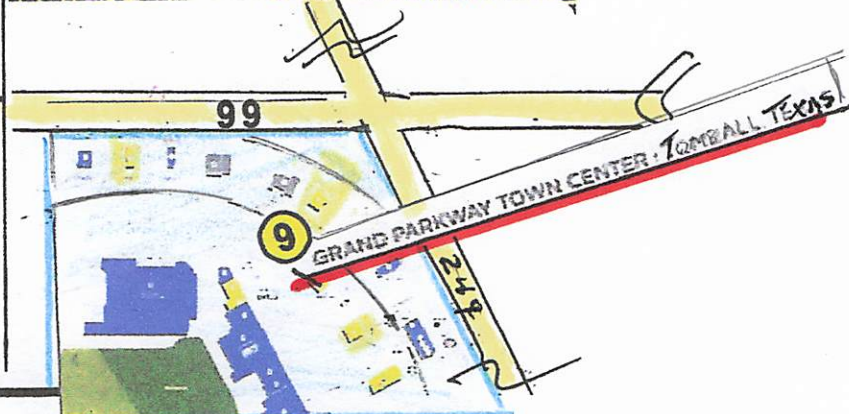
19815 Becker Rd.
Hockley, Texas 77447
Commercial and Investment Real Estate

PETE TERPSTRA
OWNER / BROKER
terprealestate@mindspring.com
www.terpstra-associates.com

OFFICE: (281) 580-4855
(281) 255-0273
CELL: (713) 898-4160

Pad Sites for Lease:

1. Tomball Parkway Business Center
5. SH 249 Freeway and Tomball Parkway
6. SH 249 Freeway and Tomball Parkway (corner)
7. SH 249 Freeway & Holdereith (North)
8. SH 249 Freeway & Holdereith (South)





Tomball: Costco! A \$16,200,000 project. With a credit union and gas station attached.

PROJECT

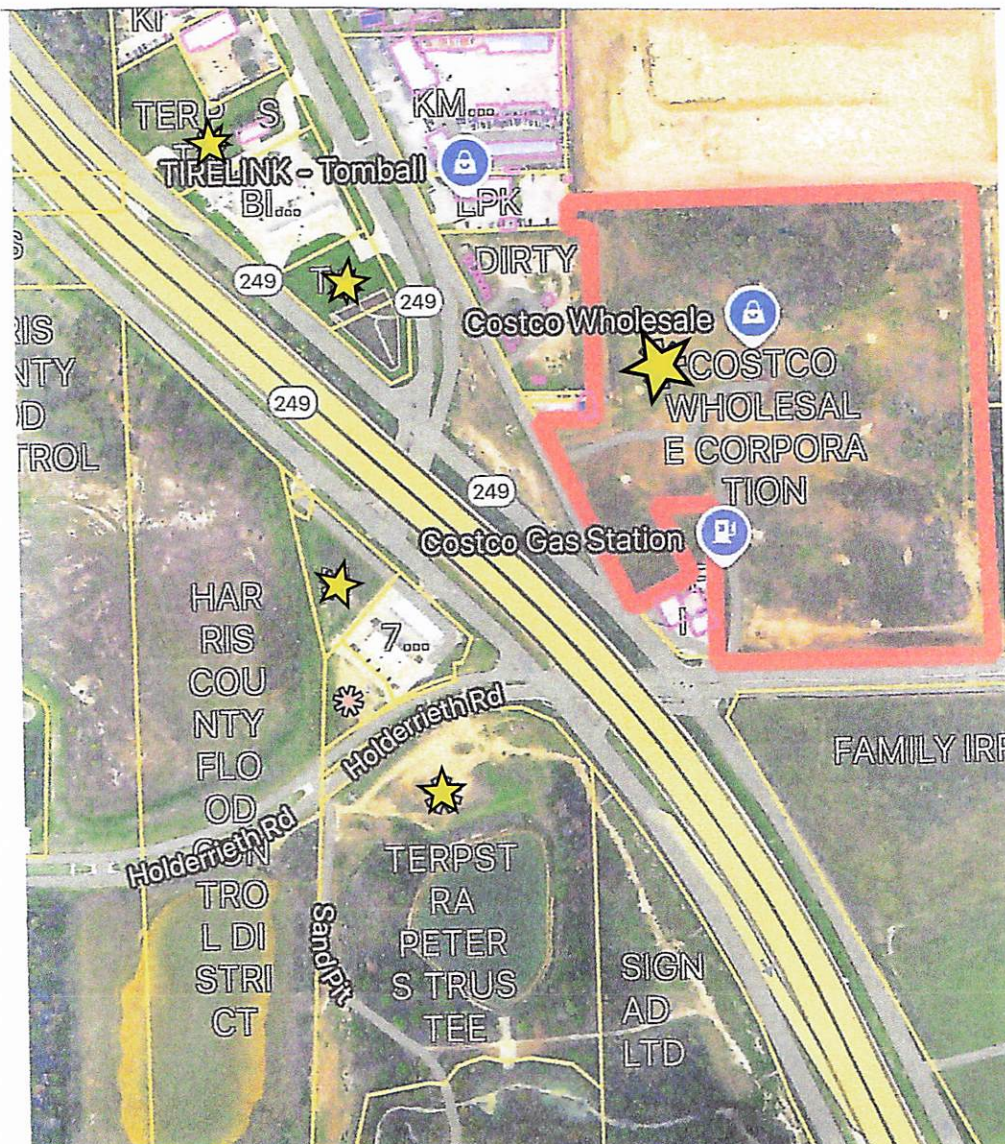
Project Name: 22-5567-01 Tomball
 Project Number: TABS2023001362
 Facility Name: Costco Wholesale Tomball
 Location Address: NEC of HWY 249 & Holderrieth Rd
 Tomball, TX 77375
 Location County: Harris

Start Date: 7/26/2024
 Completion Date: 8/23/2024
 Estimated Cost: \$16,200,000
 Type of Work: New Construction
 Type of Funds: This project is privately funded, on private land for private use.
 Scope of Work: Construct new retail warehouse with fuel facility
 Square Footage: 161,131 ft²

TERPSTRA
 & ASSOCIATES

19815 Becker Rd.
 Hockley, Texas 77447
 Commercial and Investment Real Estate

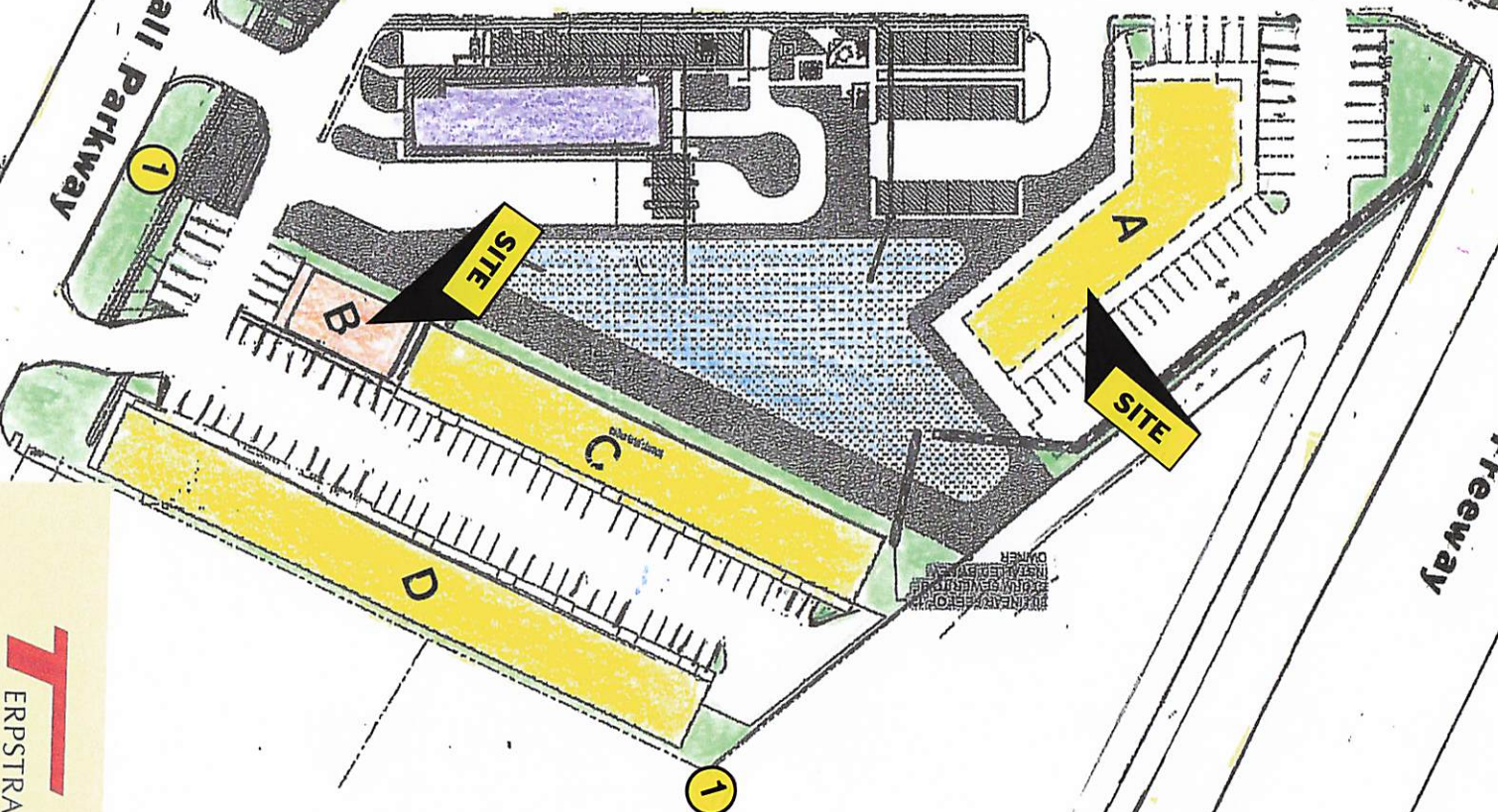
PETE TERPSTRA OFFICE: (281) 580-4855
 OWNER / BROKER (281) 255-0273
 terprealestate@mindspring.com CELL: (713) 898-4160
www.terpstra-associates.com



249 - Freeway

Walmart

Tomball Parkway



ERPSTRA
& ASSOCIATES

19815 Becker Rd.

Hockley, Texas 77447

Commercial and Investment Real Estate

PETE TERPSTRA

OWNER / BROKER

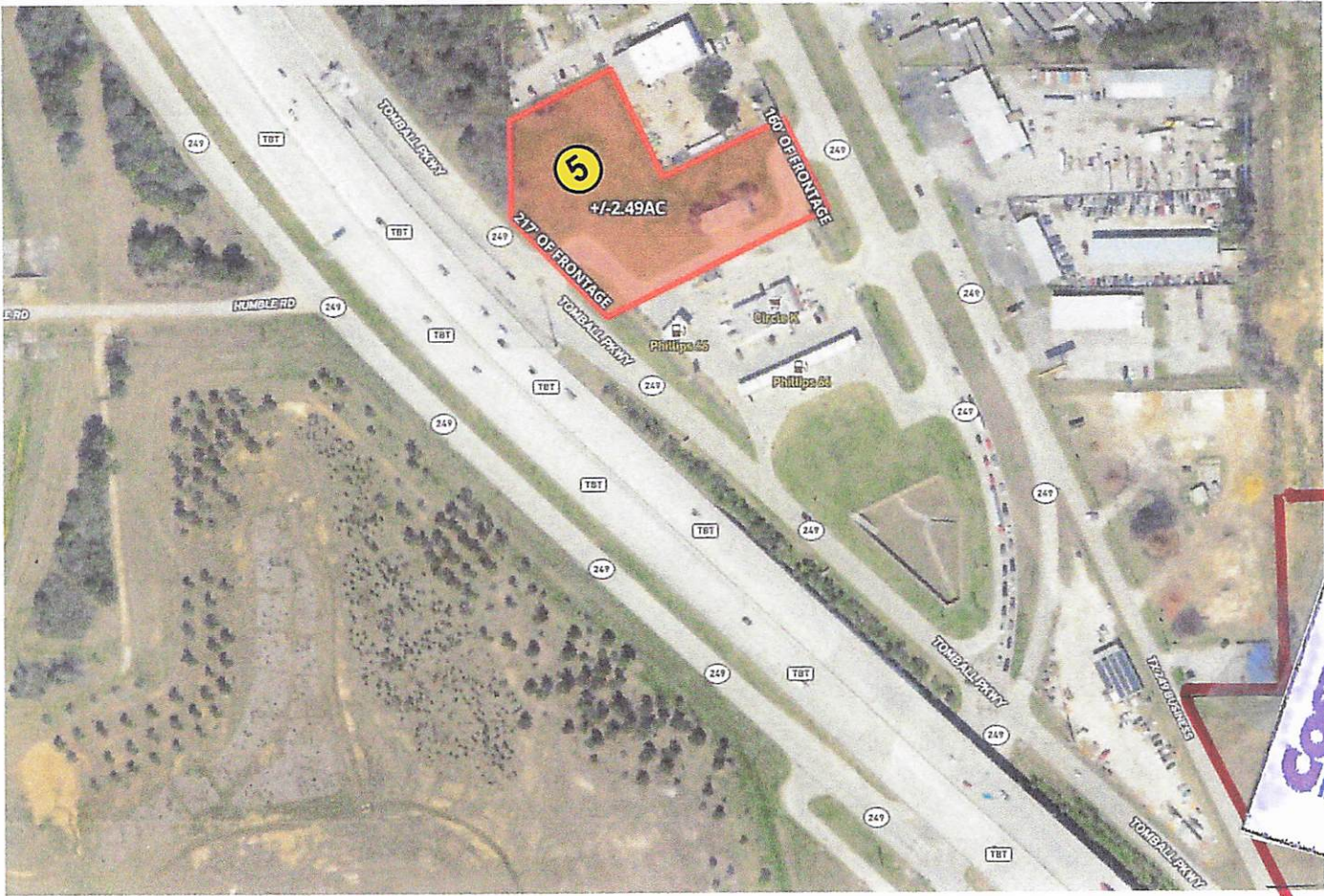
terprealestate@mindspring.com

OFFICE: (281) 580-4855

(281) 255-0273

CELL: (713) 898-4160

www.terpstra-associates.com



Description

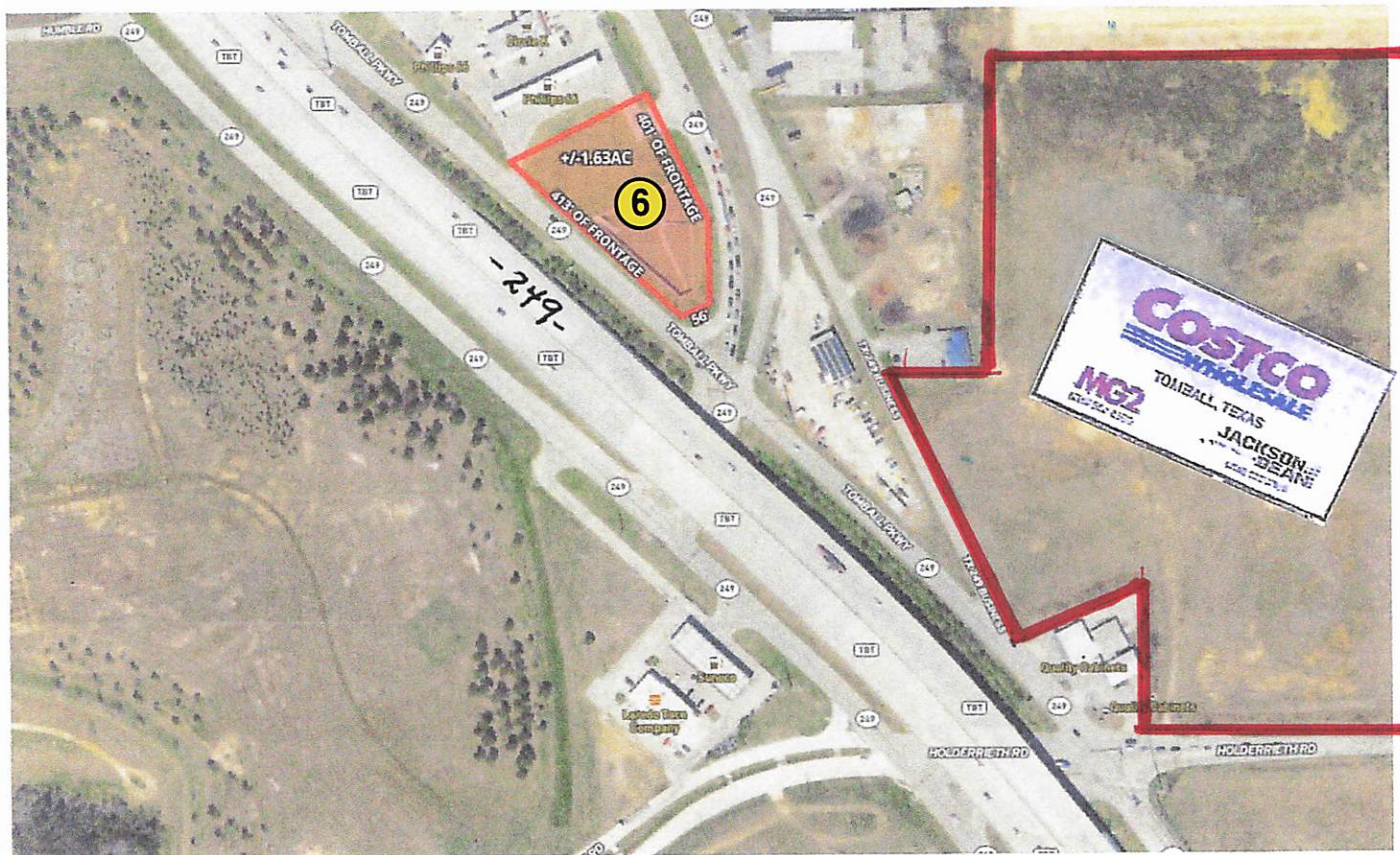
PAD SITE FRONTING BOTH THE TOMBALL TOLLWAY (249) AND TOMBALL PARKWAY (BUSINESS 249).

Map



Pictures

[Click picture to enlarge](#)



Description

PAD SITE AT POSSIBLY THE BEST CORNER LOCATION IN TOMBALL WHERE THE TOMBALL TOLLWAY (249) AND TOMBALL PARKWAY (BUSINESS 249) SPLIT.

FOR SALE / GROUND LEASE / BUILD TO SUIT

Map



Pictures

[Click picture to enlarge](#)



Description

2 PRIME PAD SITES AVAILABLE IN TOMBALL. LOCATED AT THE NORTHWEST CORNER OF TOMBALL TOLLWAY (249) AND HOLDERRIETH EXTENSION.

FOR SALE / GROUND LEASE

Map



Pictures

[Click picture to enlarge](#)

