

JACOBS
 11000 WESTCOTE DRIVE
 DALLAS, TEXAS 75241
 TEL: 972.371.7000
 WWW.JACOBS.COM

STRIPES LLC
 4525 AVERS STREET
 CORPUS CHRISTI, TEXAS 78415

STRIPES

OWNER
 STRIPES STORE NUMBER 1037
 S.H. 249 AND HOLDERBETH ROAD
 HARRIS COUNTY, TEXAS

PROJECT TITLE
 DIMENSION CONTROL PLAN

DATE
 11/20/21

DRAWING NO.
 C3.0

LEGEND

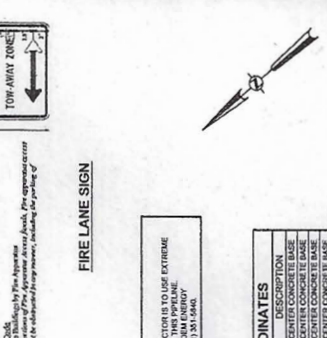
DESCRIPTION	EXISTING	PROPOSED
PAINTED STRIPES (TRAFFIC YELLOW)	---	---
PAINTED ISLAND (TRAFFIC YELLOW)	---	---
CURB	---	---
STORE SIGN	---	---
TOP OF CURB	---	---
TOP OF GRADE	---	---
TEMPORARY BENCHMARK	---	---
LIGHT POLE	---	---
RIGHT OF WAY PAINT MARKING (LAG)	---	---
EXISTING PAINT MARKING (LAG)	---	---
ELECTRIC PAINT MARKING (LAG)	---	---
GAS LINE & VALVE	---	---
FIRE HYDRANT	---	---
WATER MAIN	---	---
POWER POLE	---	---
OUT ANCHOR	---	---
WOOD FENCE	---	---

GENERAL NOTES

- ALL PAVEMENT DIMENSIONS ARE TO FACE OF CURB UNLESS INDICATED OTHERWISE. ALL BUILDING DIMENSIONS ARE TO FACE OF WALL UNLESS INDICATED OTHERWISE.
- SEE SHEETS FOR EXACT DIMENSIONS OF BUILDING, SIDEWALK, POLE, ETC.
- SEE SHEETS FOR EXACT DIMENSIONS OF BUILDING, SIDEWALK, POLE, ETC.
- REFER TO THE INSULATION PLAN FOR BIRGAUTER/LEUNG LOCATION.
- HATCHING SHOULD BE POLE MOUNTED. REFER TO ARCHITECTURAL PLANS.
- SEE STRUCTURAL PLAN FOR LIGHT POLE FOOTINGS.

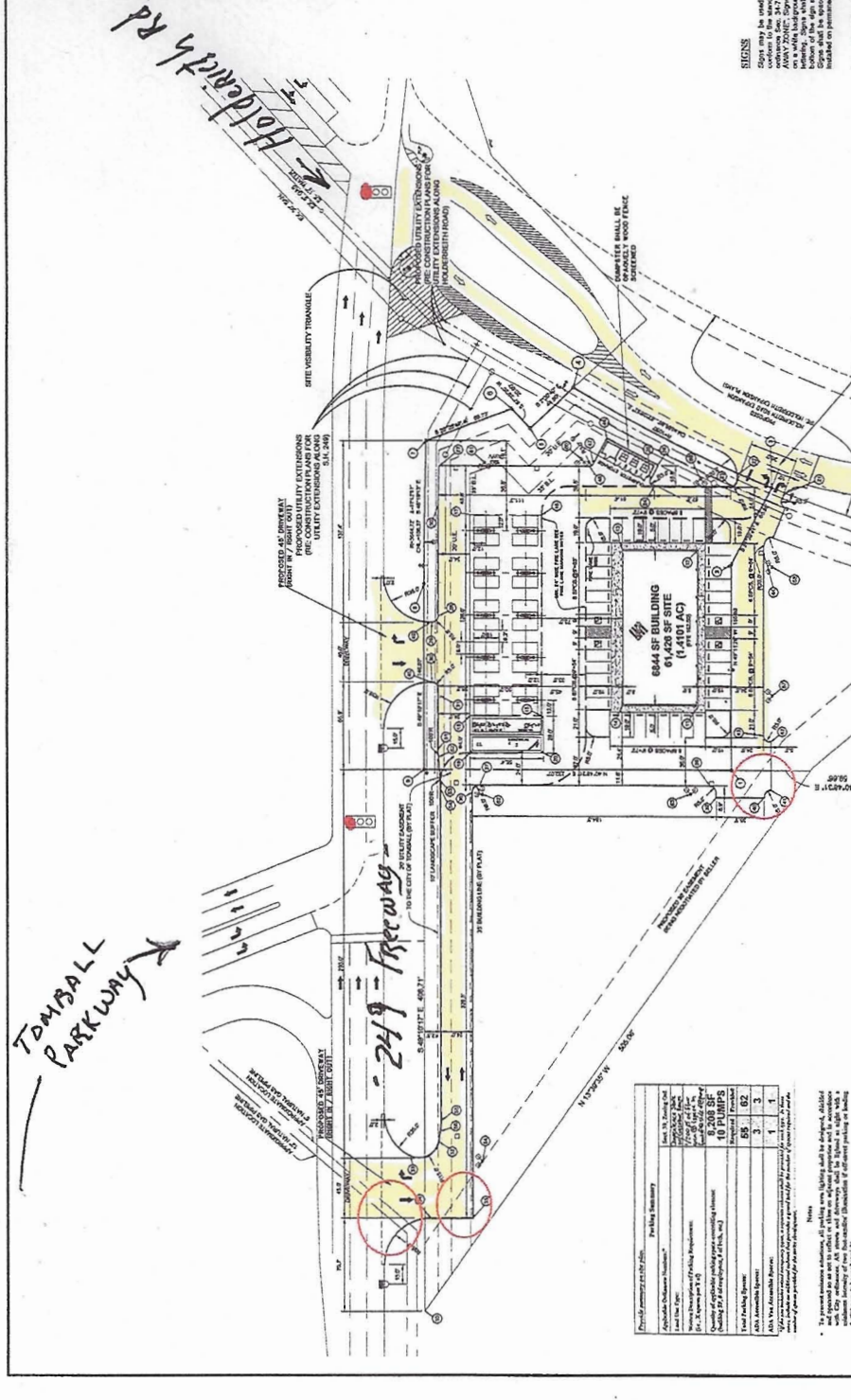
FIRE LANE MARKING NOTES

ALL FIRE LANE MARKING SHALL BE IN ACCORDANCE WITH CITY OF TOMBALL FIRE LANE MARKING. ALL PAVEMENT MARKINGS SHALL BE INSTALLED USING WHITE PAINT. MARKINGS SHALL BE INSTALLED IN THE FIRE LANE TO INDICATE THE FIRE LANE TO BE MAINTAINED. THE WORDS "FIRE LANE" SHALL BE PAINTED AT 20' INTERVALS ON THE RED BUSHING MARKINGS. MARKINGS SHALL BE PAINTED IN THE TRAFFIC SURFACE THE WORDS "NO PARKING" SHALL BE PAINTED AT 20' INTERVALS ON THE RED BUSHING MARKINGS TO BE MAINTAINED. REFER TO ARCHITECTURAL PLANS FOR EXACT DIMENSIONS OF MARKINGS.



LIGHT POLE COORDINATES

POINT	NORTHING	EASTING	DESCRIPTION
57	1505183.077	300041.143	CENTER CONCRETE BASE
58	1505183.077	300041.143	CENTER CONCRETE BASE
59	1505183.077	300041.143	CENTER CONCRETE BASE
60	1505183.077	300041.143	CENTER CONCRETE BASE
61	1505183.077	300041.143	CENTER CONCRETE BASE
62	1505183.077	300041.143	CENTER CONCRETE BASE
63	1505183.077	300041.143	CENTER CONCRETE BASE
64	1505183.077	300041.143	CENTER CONCRETE BASE



CAUTION!!!
 EXISTING GAS LINES EXIST ON SITE. CONTRACTOR IS TO USE EXTREME CARE TO IDENTIFY ALL GAS LINES. CONTRACTOR TO NOTIFY ALL UTILITIES AT A MINIMUM 48 HOURS IN ADVANCE OF ANY EXCAVATION OR BURIAL WORK. CONTRACTOR TO NOTIFY ALL UTILITIES AT A MINIMUM 48 HOURS IN ADVANCE OF ANY EXCAVATION OR BURIAL WORK.

PAVEMENT LAYOUT CONTROL POINTS

POINT	NORTHING	EASTING	DESCRIPTION
27	1505183.077	300041.143	PAVEMENT POINT
28	1505183.077	300041.143	PAVEMENT POINT
29	1505183.077	300041.143	PAVEMENT POINT
30	1505183.077	300041.143	PAVEMENT POINT
31	1505183.077	300041.143	PAVEMENT POINT
32	1505183.077	300041.143	PAVEMENT POINT
33	1505183.077	300041.143	PAVEMENT POINT
34	1505183.077	300041.143	PAVEMENT POINT
35	1505183.077	300041.143	PAVEMENT POINT
36	1505183.077	300041.143	PAVEMENT POINT
37	1505183.077	300041.143	PAVEMENT POINT
38	1505183.077	300041.143	PAVEMENT POINT
39	1505183.077	300041.143	PAVEMENT POINT
40	1505183.077	300041.143	PAVEMENT POINT
41	1505183.077	300041.143	PAVEMENT POINT
42	1505183.077	300041.143	PAVEMENT POINT
43	1505183.077	300041.143	PAVEMENT POINT
44	1505183.077	300041.143	PAVEMENT POINT
45	1505183.077	300041.143	PAVEMENT POINT
46	1505183.077	300041.143	PAVEMENT POINT
47	1505183.077	300041.143	PAVEMENT POINT
48	1505183.077	300041.143	PAVEMENT POINT
49	1505183.077	300041.143	PAVEMENT POINT
50	1505183.077	300041.143	PAVEMENT POINT

LAYOUT CONTROL POINTS

POINT	NORTHING	EASTING	DESCRIPTION
1	1505183.077	300041.143	PRIORITY CORNER
2	1505183.077	300041.143	PRIORITY CORNER
3	1505183.077	300041.143	PRIORITY CORNER
4	1505183.077	300041.143	PRIORITY CORNER
5	1505183.077	300041.143	PRIORITY CORNER
6	1505183.077	300041.143	PRIORITY CORNER
7	1505183.077	300041.143	PRIORITY CORNER
8	1505183.077	300041.143	PRIORITY CORNER
9	1505183.077	300041.143	PRIORITY CORNER
10	1505183.077	300041.143	PRIORITY CORNER
11	1505183.077	300041.143	PRIORITY CORNER
12	1505183.077	300041.143	PRIORITY CORNER
13	1505183.077	300041.143	PRIORITY CORNER
14	1505183.077	300041.143	PRIORITY CORNER
15	1505183.077	300041.143	PRIORITY CORNER
16	1505183.077	300041.143	PRIORITY CORNER
17	1505183.077	300041.143	PRIORITY CORNER
18	1505183.077	300041.143	PRIORITY CORNER
19	1505183.077	300041.143	PRIORITY CORNER
20	1505183.077	300041.143	PRIORITY CORNER

NOTES

- The proposed work shall be in accordance with the City of Tomball Fire Lane Marking. All pavement markings shall be installed using white paint. Markings shall be installed in the fire lane to indicate the fire lane to be maintained. The words "FIRE LANE" shall be painted at 20' intervals on the red bushing markings. Markings shall be painted in the traffic surface the words "NO PARKING" shall be painted at 20' intervals on the red bushing markings to be maintained. Refer to architectural plans for exact dimensions of markings.
- Refer to the insulation plan for Birgauter/Leung location.
- Hatching should be pole mounted. Refer to architectural plans.
- See structural plan for light pole footings.