

CURVE	RADIUS	DELTA	ARC	TANG
C1	25.00	90°00'00"	39.27	25.00

**+/- 3.128 ac.
Sold**

PORTION OF
RESTRICTED RESERVE "A"
COUNTRY LAKE ESTATES
COMMERCIAL RESERVE
FILM CODE NO. 686105
M.R.H.C.
PORTION OF
CALLED 11.393 ACRES
H.C.C.F. NO. W680793

**SOLD
LOCAL MEAT
MARKET**

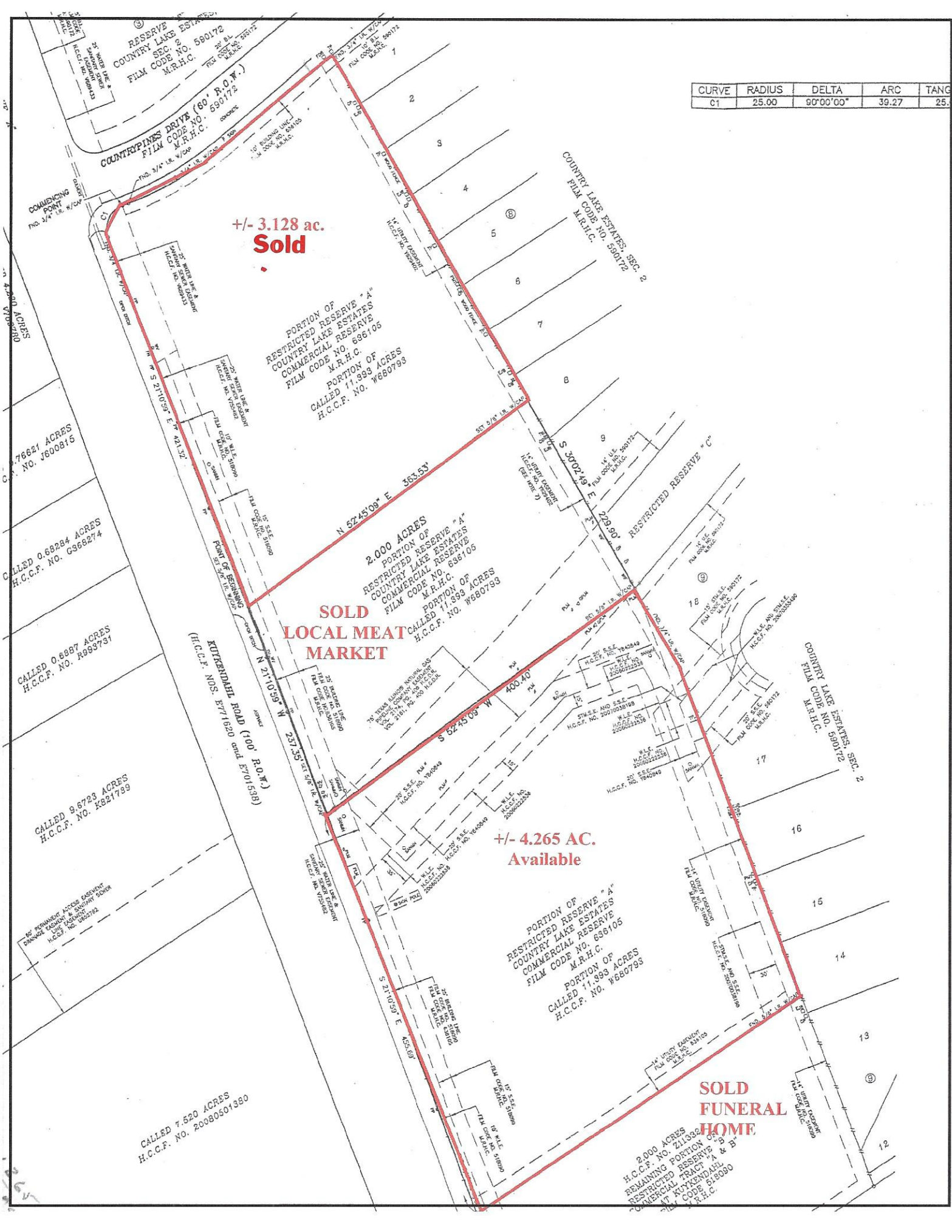
2.000 ACRES
PORTION OF
RESTRICTED RESERVE "A"
COUNTRY LAKE ESTATES
COMMERCIAL RESERVE
FILM CODE NO. 686105
M.R.H.C.
PORTION OF
CALLED 11.393 ACRES
H.C.C.F. NO. W680793

**+/- 4.265 AC.
Available**

PORTION OF
RESTRICTED RESERVE "A"
COUNTRY LAKE ESTATES
COMMERCIAL RESERVE
FILM CODE NO. 686105
M.R.H.C.
PORTION OF
CALLED 11.393 ACRES
H.C.C.F. NO. W680793

**SOLD
FUNERAL
HOME**

2.000 ACRES
H.C.C.F. NO. 211392
REMAINING PORTION OF
RESTRICTED RESERVE "A"
IN KYWENDAHU
FILM CODE 518090
M.R.H.C.



RESERVE "A"
COUNTRY LAKE ESTATES
SEC. 2
FILM CODE NO. 590172
M.R.H.C.

COUNTRYPINES DRIVE (60' R.O.W.)
FILM CODE NO. 690172
M.R.H.C.

COMMENCING POINT
No. 3/4" IR. #7/07

7.6621 ACRES
H.C.C.F. NO. J600815

0.68284 ACRES
H.C.C.F. NO. CS68274

0.6897 ACRES
H.C.C.F. NO. R993731

9.6723 ACRES
H.C.C.F. NO. K821789

7.520 ACRES
H.C.C.F. NO. 20080501380

2.000 ACRES
H.C.C.F. NO. 211392
REMAINING PORTION OF
RESTRICTED RESERVE "A"
IN KYWENDAHU
FILM CODE 518090
M.R.H.C.

COUNTRY LAKE ESTATES - SEC. 2
FILM CODE NO. 590172
M.R.H.C.

RESTRICTED RESERVE "C"

RESTRICTED RESERVE "A"

RESTRICTED RESERVE "B"

RESTRICTED RESERVE "D"

RESTRICTED RESERVE "E"

RESTRICTED RESERVE "F"

RESTRICTED RESERVE "G"

RESTRICTED RESERVE "H"

RESTRICTED RESERVE "I"

RESTRICTED RESERVE "J"

RESTRICTED RESERVE "K"

RESTRICTED RESERVE "L"

RESTRICTED RESERVE "M"

RESTRICTED RESERVE "N"

RESTRICTED RESERVE "O"

RESTRICTED RESERVE "P"

RESTRICTED RESERVE "Q"

RESTRICTED RESERVE "R"

RESTRICTED RESERVE "S"

RESTRICTED RESERVE "T"

RESTRICTED RESERVE "U"

RESTRICTED RESERVE "V"

RESTRICTED RESERVE "W"

RESTRICTED RESERVE "X"

RESTRICTED RESERVE "Y"

RESTRICTED RESERVE "Z"