

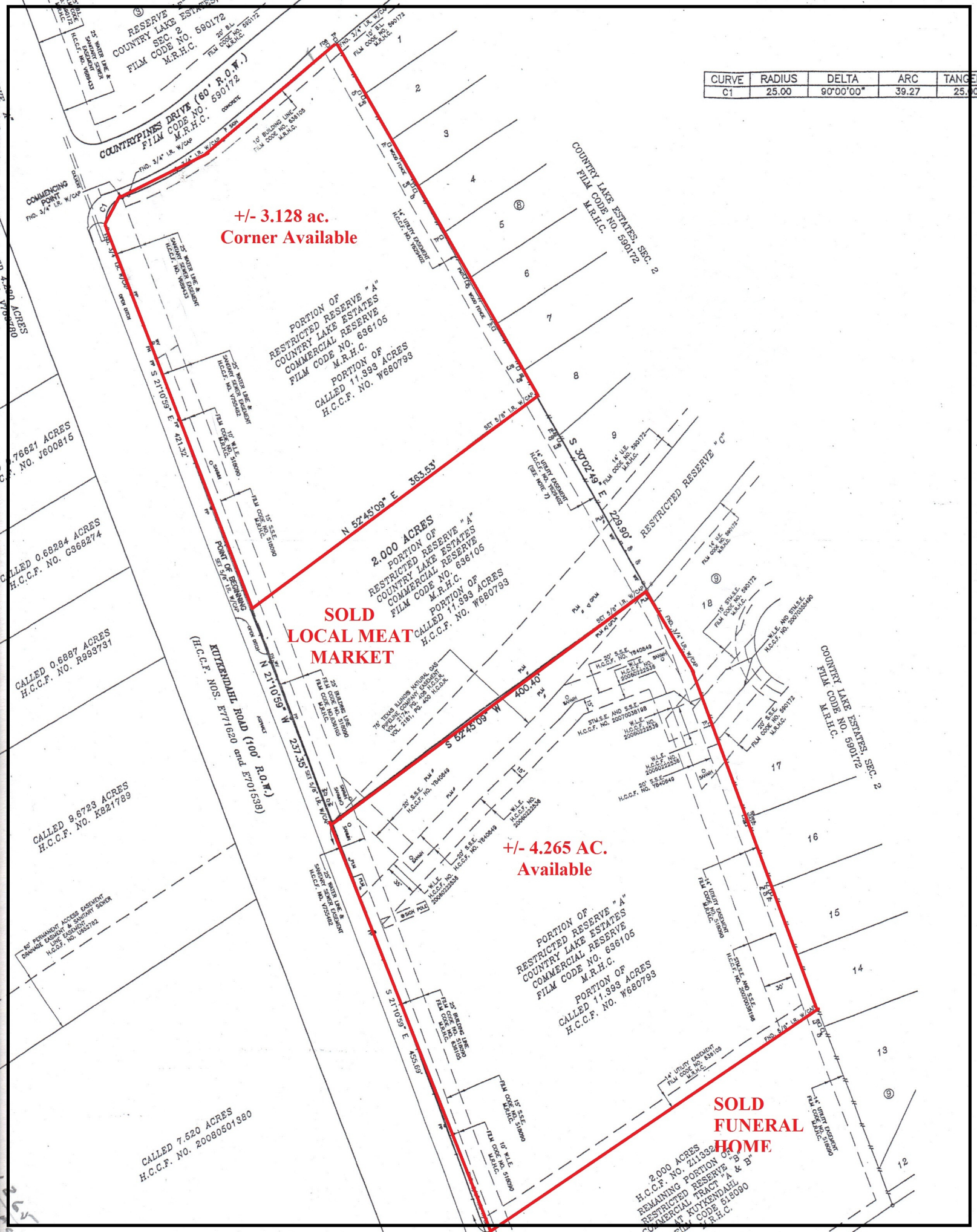
CURVE	RADIUS	DELTA	ARC	TANGENT
C1	25.00	90°00'00"	39.27	25.00

**+/- 3.128 ac.
Corner Available**

**SOLD
LOCAL MEAT
MARKET**

**+/- 4.265 AC.
Available**

**SOLD
FUNERAL
HOME**



RESERVE
COUNTRY LAKE ESTATES
SEC. 2
FILM CODE NO. 590172
M.R.H.C.

76621 ACRES
NO. J600816

0.68284 ACRES
H.C.C.F. NO. G568274

0.6887 ACRES
H.C.C.F. NO. R999731

9.8723 ACRES
H.C.C.F. NO. K821789

7.520 ACRES
H.C.C.F. NO. 20080601380

PORTION OF
RESTRICTED RESERVE "A"
COUNTRY LAKE ESTATES
COMMERCIAL RESERVE
FILM CODE NO. 636105
M.R.H.C.
PORTION OF
CALLED 11.393 ACRES
H.C.C.F. NO. W680793

2.000 ACRES
PORTION OF
RESTRICTED RESERVE "A"
COUNTRY LAKE ESTATES
COMMERCIAL RESERVE
FILM CODE NO. 636105
M.R.H.C.
PORTION OF
CALLED 11.393 ACRES
H.C.C.F. NO. W680793

PORTION OF
RESTRICTED RESERVE "A"
COUNTRY LAKE ESTATES
COMMERCIAL RESERVE
FILM CODE NO. 636105
M.R.H.C.
PORTION OF
CALLED 11.393 ACRES
H.C.C.F. NO. W680793

2.000 ACRES
H.C.C.F. NO. 211332
REMAINING PORTION OF
RESTRICTED RESERVE
AT KUYKENDALL
FILM CODE 51.8090
M.R.H.C.

COUNTRY LAKE ESTATES, SEC. 2
FILM CODE NO. 590172
M.R.H.C.

COUNTRY LAKE ESTATES, SEC. 2
FILM CODE NO. 590172
M.R.H.C.

COMMENCING POINT
NO. 3/4" I.R. W/COE

PERMANENT ACCESS EASEMENT
DRAINAGE EASEMENT & SANITARY SEWER
H.C.C.F. NO. D457102

NO. 3/4" I.R. W/COE
NO. 3/4" I.R. W/COE
NO. 3/4" I.R. W/COE

NO. 3/4" I.R. W/COE
NO. 3/4" I.R. W/COE
NO. 3/4" I.R. W/COE

NO. 3/4" I.R. W/COE
NO. 3/4" I.R. W/COE
NO. 3/4" I.R. W/COE

NO. 3/4" I.R. W/COE
NO. 3/4" I.R. W/COE
NO. 3/4" I.R. W/COE

NO. 3/4" I.R. W/COE
NO. 3/4" I.R. W/COE
NO. 3/4" I.R. W/COE

NO. 3/4" I.R. W/COE
NO. 3/4" I.R. W/COE
NO. 3/4" I.R. W/COE

NO. 3/4" I.R. W/COE
NO. 3/4" I.R. W/COE
NO. 3/4" I.R. W/COE

NO. 3/4" I.R. W/COE
NO. 3/4" I.R. W/COE
NO. 3/4" I.R. W/COE

NO. 3/4" I.R. W/COE
NO. 3/4" I.R. W/COE
NO. 3/4" I.R. W/COE

NO. 3/4" I.R. W/COE
NO. 3/4" I.R. W/COE
NO. 3/4" I.R. W/COE