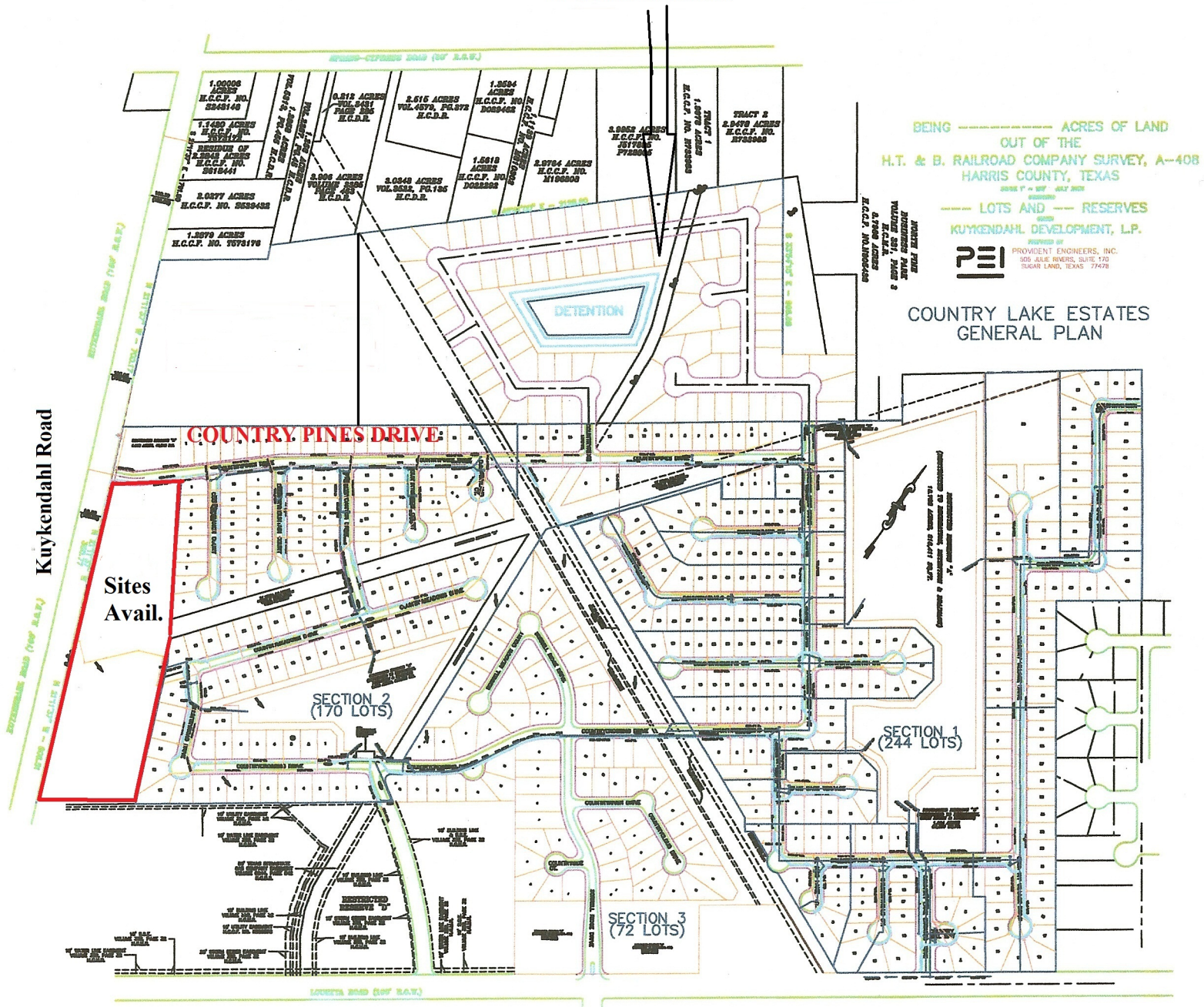


+/- 50 ac. available



BEING ----- ACRES OF LAND
OUT OF THE
H.T. & B. RAILROAD COMPANY SURVEY, A-408
HARRIS COUNTY, TEXAS
DATE F - 107 - 017-001

--- LOTS AND --- RESERVES
KUYKENDAHL DEVELOPMENT, L.P.



PROVIDENT ENGINEERS, INC.
305 BLUE RIVERS, SUITE 170
SUGAR LAND, TEXAS 77478

COUNTRY LAKE ESTATES GENERAL PLAN