

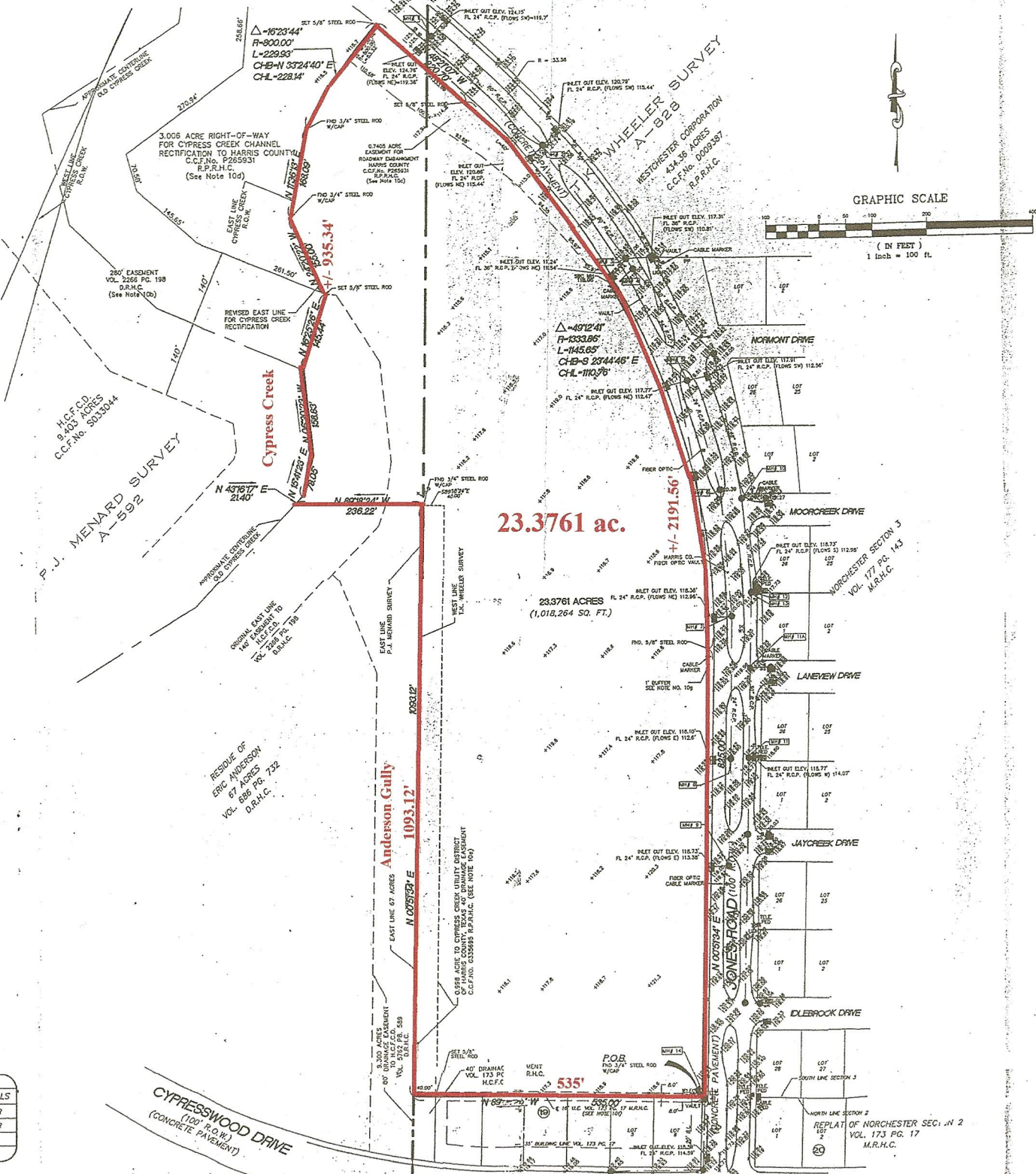


GRAPHIC SCALE



( IN FEET )

1 inch = 100 ft.



Cypress Creek

23.3761 ac.

23.3761 ACRES  
(1,018,264 SQ. FT.)

Anderson Gully  
1093.12'

535'

CYPRESSWOOD DRIVE  
(10' R.O.W.)  
(CONCRETE PAVEMENT)

H.C.F.C.D.  
9.403 ACRES  
C.C.F.No. 5033044

P.J. MENARD SURVEY  
A-592

3,006 ACRE RIGHT-OF-WAY  
FOR CYPRESS CREEK CHANNEL  
RECTIFICATION TO HARRIS COUNTY  
C.C.F.No. 265931  
P.P.R.H.C.  
(See Note 10d)

280' EASEMENT  
VOL. 2286 PG. 198  
D.R.H.C.  
(See Note 10b)

RESIDUE OF  
ERIC ANDERSON  
67 ACRES  
VOL. 886 PG. 732  
D.R.H.C.

$\Delta$ -4912.41'  
R-1333.85'  
L-145.65'  
CH-B-S 23744.48' E  
CH-L-110378'

N 4376.17' E  
2140'

N 8076.21' W  
236.22'

N 00529.2' E  
1093.12'

N 7191.56' E  
2191.56'

NORMONT DRIVE

MOORCREEK DRIVE

LANEY DRIVE

JAYCREEK DRIVE

DLEBROCK DRIVE

REPLAT OF NORCHESTER SEC. 3  
VOL. 173 PG. 17  
M.R.H.C.

WHEELER SURVEY  
A-528

JONES ROAD (100')

NORCHESTER SECTION 3  
VOL. 177 PG. 143  
M.R.H.C.

NORTH LINE SECTION 2  
REPLAT OF NORCHESTER SEC. 3  
VOL. 173 PG. 17  
M.R.H.C.

INITIALS  
LDB  
LDB