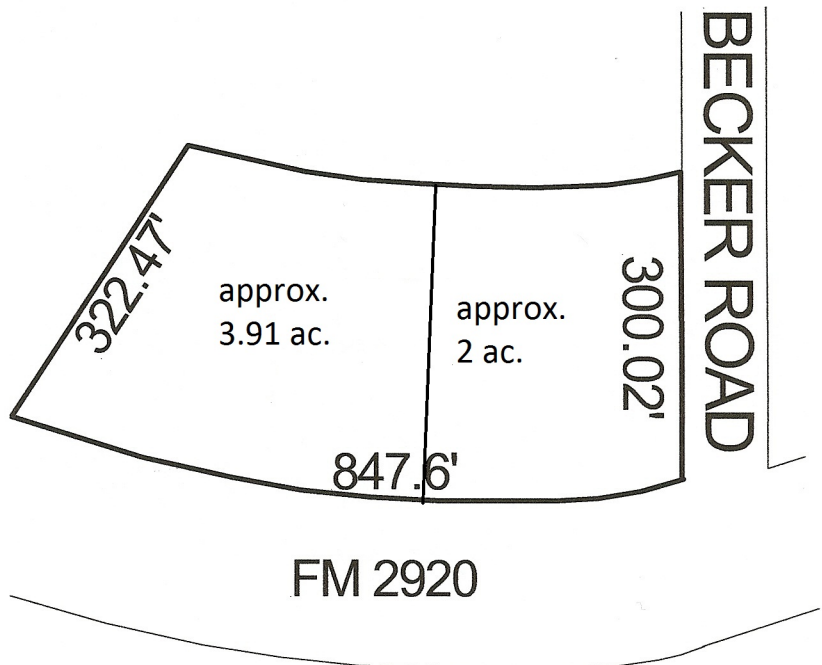


5.193 ACRES 2920

- LOCATED IN NW. HARRIS COUNTY, 9 MILES WEST OF TOMBALL, CLOSE TO 290, HUNTER'S CREEK ESTATES, & SPRING CREEK RANCH.
- NICE COMMERCIAL CORNER FOR SMALL BUSINESS USER OR INVESTOR.
- 847+ FEET OF FRONTAGE ON 2920. COULD DIVIDE

Contact:
TERPSTRA & ASSOCIATES
281-580-4855 OFFICE
281-580-3808 FAX
terprealestate@mindspring.com



Information is deemed to be reliable, but not warranted by Terpstra & Associates. Availability, Size and Price are subject to change without notice. Size is not to scale.